



---

ARCHITECTURAL PRECAST CONCRETE & METAL FABRICATION

---

## COMPANY PROFILE

WE SENSE AND CAST YOUR SPACE





# CONTENTS

General Introduction

Precast Concrete - What & Why?

Wall Panels

Beams & Columns

GRC & GRP

Boundary Walls

Hollow core & solid slab

Staircase

Ultra High-Performance Concrete

Total Precast System

Infrastructure



You can visit our website:  
[www.senseofspace.co.in](http://www.senseofspace.co.in)



## Why use Sense Of Space Precast Concrete?

---

There are numerous reasons as to why Precast Concrete is beneficial. They are strong, efficient and easy to install. Used for thousands of years precast concrete has stood the test of time while evolving to become even more versatile. Some advantages are:

1. Durability – Studies have shown that precast concrete can provide a service life of more than 100 years, reducing maintenance and operating costs
2. Safety – Precast concrete is non-combustible with built-in fire-resistant capability. It creates a safe envelope that helps protect people, equipment and the building itself.
3. Easy Installation – Precast concrete products save time—they arrive at your job site ready to install.
4. Quality – SOS Precast concrete is produced in an environment that is under stringent quality control underlined by the various awards and certificates received by SOS.



## Why use Sense Of Space Precast Concrete?

---

- Off-site manufacturing means stricter quality and safety control, therefore resulting in better quality and more durable products
- Faster construction time
- Less formwork, site clutter, propping and temporary works, which in turn leads to better site management, lower costs and increased safety
- Long spans especially for prestressed beams.
- High Loading Capacity
- Less Weather Dependency
- Can be entirely environment friendly

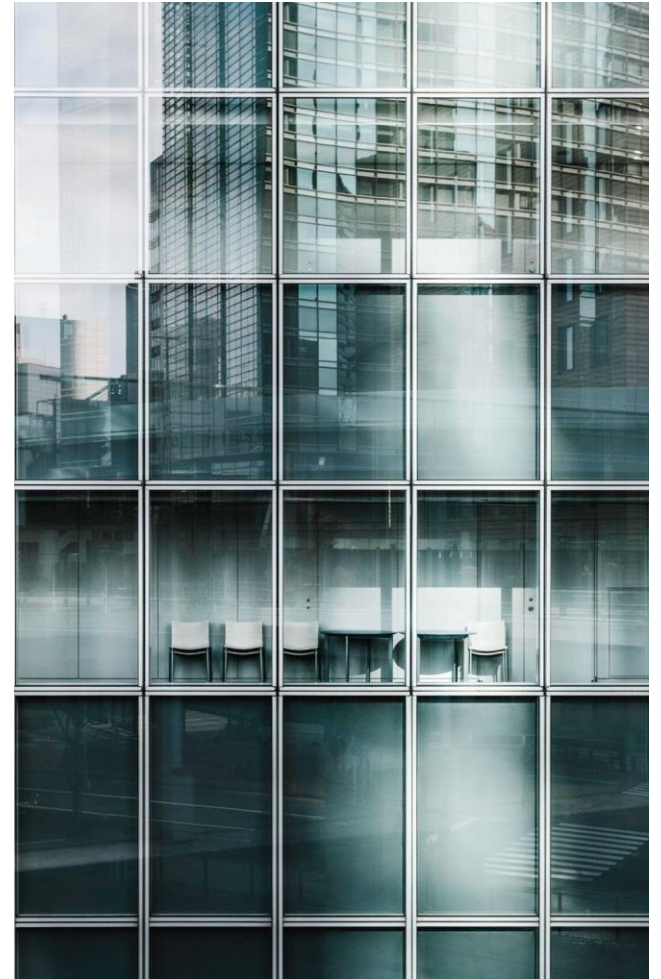
# General Introduction

---

**SENSE OF SPACE (SOS)** is one of the upcoming leading precast concrete company in INDIA.

SOS delivers “Total Precast Solutions” from design & value engineering to manufacture, logistics and installation of precast cement products.

Established in 2020, SOS pioneered the market with high quality precast elements such as: Insulated Sandwich Walls (load & non-load bearing), Solid/ Internal Walls (load & non-load bearing), Cladding Walls (exposed aggregates, grey and pigmented finishes), Pre-stressed Hollow Core Slabs covering spans up to 24m, Precast & Pre-stressed Beams & Columns, Boundary Walls & Footings, GRC, etc.





Sense Of Space

## Vision

---

At SOS, we aim to be the most value-creating, most specialized and advanced Total Precast Concrete Solutions provider in the INDIA with an emphasis on exceptional quality control, up-to-date technology and practices, and most importantly integrity in all aspects of the project, whilst keeping the interest of our employees and clients at heart.



Sense Of Space

## Mission

---

To be the leader in the market by efficiently and effectively providing a full range of the highest quality concrete products, services and solutions at competitive prices whilst focusing on our clients' needs and continuously enhancing our products and services through safe, sustainable and innovative manufacturing practices.



## **Research and Development**

---

With innovation and progress at heart, SOS possesses an ultramodern R&D department that is responsible for the development of innovative concrete products and methods whilst continuously improving existing ones according to internationally approved standards as well as the requirements of the construction industry. Furthermore, SOS is active in sharing views and exchanging technological know-how with their clients and suppliers. Before SOS products reach the market, they are subjected to continuous, comprehensive and meticulous controls made by the company's Quality Control Department



## **Health and Safety**

---

When it comes to the construction industry, safety is a critical part of the everyday work environment. At SOS we need to stay attentive at all times, and we are always dedicated in providing the means to help establish a strong safety culture and maintain a safe work environment. The SAFTY Department at SOS, strategically placed under Concrete Industries complex Technical Department, focuses on developing and implementing progressive health and safety standards that will control risk, prevent accidents and ensure safety for all in the construction process.



Sense Of Space

**Technology**

---

Ultra-modern computerized control systems with a user- friendly interface ensure plants at concrete industries complex are operated reliably and up to the highest quality standards. Highly sophisticated and real-time drones are utilized to monitor running projects enabling maximum output of the highest concrete qualities, whether it being precast, ready-mix or block.

Additionally, SOS is now utilizing high-end design and modeling software programs. Virtual reality, for example is introduced to the design and engineering processes allowing SOS technical staff to probe and interact with projects before they have even begun. This means that changes can be made before the project is put into motion in order to ensure an accurate result.





Sense Of Space **Core Values**

---

**P**erformance: Our passion for everything connected to performance drives our approach to how we do business, from the design to the handing over of our products.

**R**esponsibility: We recognize our social and ethical responsibility and we consistently fulfil the promises given to our Customers and Employees.

**E**xcellence: We deliver world class Quality products and services, achieving excellence each passing day.

**C**apability: We offer to our Clients our Capability, built up over years of experience and learning.

**A**ccountability: We acknowledge that our actions influence our customers, fellow employees, and the community in which we operate. We are committed to protecting the environment.

**S**afety: We believe that injuries are preventable and we manage business operations to make it so.

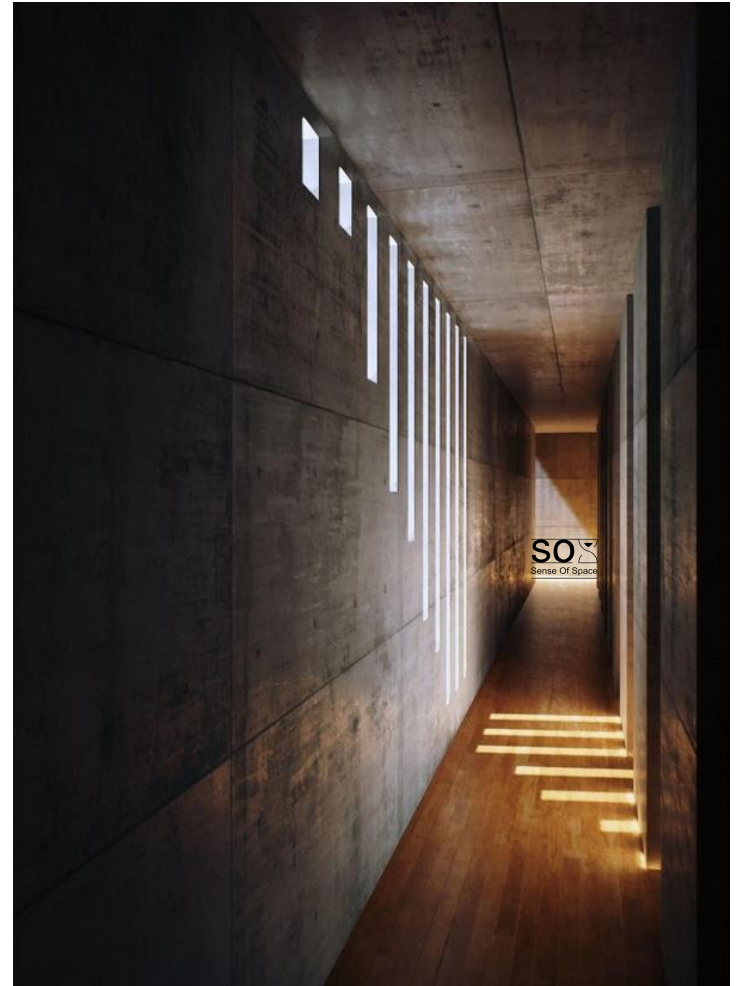
**T**eamwork: We are strongly committed to working together for mutual benefit and coordinated efforts.



# PRODUCTS

---

Wall Panels  
Beams & Columns  
GRC & GRP  
Boundary Walls  
Hollow core & solid slabs  
Staircase  
Ultra High-Performance Concrete  
Total Precast System



# Wall Panels

**Considerable development has happened in the area of structural design within the past decade which has led to a significant increase in the use of precast wall elements in the various projects.**

Considerable development has happened in the area of structural design within the past decade which has led to a significant increase in the use of precast wall elements in the various projects.

Precast wall panels can be used either as structural load bearing elements offering a rigid framework to the overall structural system or as architectural cladding elements providing an elegant, pre-finished façade to the entire structure.

SOS' design team thoroughly performs an in-depth analysis of the requirements of each project and proposes custom made solutions meeting all project requirements. SOS offers a wide variety of Precast Wall Panels including:

- **Solid Panels:** They are usually used as interior panels in any structure and can be designed either as load bearing panels (for transferring horizontal & vertical forces) or as non load bearing partition walls. Standard thickness of these elements ranges from 100mm, 120mm, 150mm, 180mm, 200mm and 250mm however any special thicknesses as required in the project can also be fabricated.
- **Sandwich Panels:** These panels are manufactured with built-in insulation material and can be used both as cladding panels as well as load bearing panels. They are widely used in villas, residential buildings & industrial complexes where efficient thermal and noise control is required. Standard thickness of these elements ranges from 200mm, 210mm, 230mm, 250mm, 270mm and 300mm however any special thicknesses as required by the client can also be produced.
- **Cladding Panels:** They are normally single skin units with thickness ranging from 100mm, 120mm, 150mm & 180mm however they can also be designed as sandwich panels (if required). SOS offers multiple finishing options for these elements such as acid etched, smooth or coarse ground, exposed aggregate etc... which can match the various requirements in different projects.

# Wall Panels

## Advantages

1. Provides custom made solution for each individual project.
2. Huge variety of pre-finished options available; No plastering required.
3. Provides high level of thermal & noise insulation.
4. Can be designed to act as shear walls thus eliminating the need to resize columns & beams.
5. Superior fire resistance.
6. Offers high speed and ease of construction.
7. Offers smooth internal surface, ready to receive paint.
8. Reduced site manpower.
9. Electrical conduits and boxes can be casted into panels during production phase.

## Applications

1. Villas
2. Schools
3. Industrial & Warehouse Complex
4. Labour Accommodations
5. Residential and Commercial Buildings .



# Beams & Column

**Precast columns & beams provide a versatile and flexible solution to the structural design of any project thereby offering considerable benefits to all the stakeholders both in terms of time as well as money.**

Precast columns & beams provide a versatile and flexible solution to the structural design of any project thereby offering considerable benefits to all the stakeholders both in terms of time as well as money.

SOS offers a wide array of technical options in both these items which can be used in a variety of applications as detailed below.

Our standard sections for Beams can be designed both with normal as well as Pre-stressed reinforcements and can be designed in various shapes such as rectangular shaped beams, I Girders, L sections and many other project specific shapes / designs. As & when required the beams can also be designed to provide exposed reinforcements for composite structure by taking into account the concrete topping or screed on top. Using pre-stressed strands in beams also enables the usage of beams over a longer span thereby allowing more flexibility & open spaces in the project. Columns are typically used to support beams and spandrels in the various applications and precast concrete structural systems of all types. They can be typically designed as single-tier or multilevel and in various shapes (rectangular, circular, irregular) and sizes depending on the project requirements. Their sizes and shapes can also be varied to satisfy both architectural and structural requirements of any project.

The use of precast columns in any project is a win-win situation for all stakeholders as they offer a high quality product at extremely fast installation speeds thereby eliminating the need of any kind of shuttering / curing as in the case of traditional methodology.

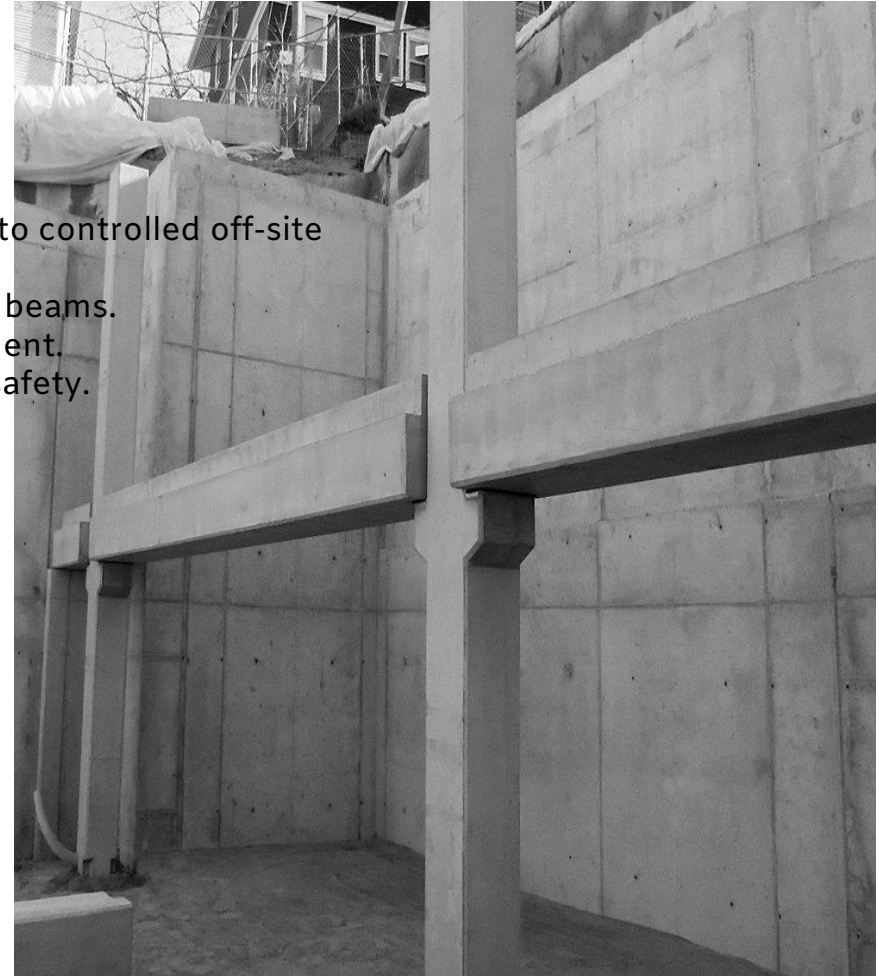
# Beams & Column

## Advantages

1. Considerable saving in time and cost.
2. Better quality & more durable end product (due to controlled off-site production).
3. Easy to achieve longer spans using pre-stressed beams.
4. Significant reduction in site manpower requirement.
5. Better overall site management with increased safety.

## Applications

1. Schools
2. Multi-level Parking structures
3. Labour Accommodations
4. Residential and Commercial Complexes
5. Industrial Warehouses



# Boundary wall

**With the onset of high demand for Boundary Wall, SOS has been successful in developing a total precast solution for this item. We currently utilize the best modern concrete technology to offer a pioneering & cost effective engineering solution which can be tailor made to suit various kind of project requirements.**

With the onset of high demand for Boundary Wall, SOS has been successful in developing a total precast solution for this item. We currently utilize the best modern concrete technology to offer a pioneering & cost effective engineering solution which can be tailor made to suit various kind of project requirements.

Our boundary wall system offers a high quality product together with architectural freedom wherein all the necessary elements required for this scope can be custom designed to meet individual project requirements in terms of height, width, design features, colors & shapes.

# Boundary wall

## Advantages

1. Flexibility in terms of design, colour & shape.
2. Low maintenance.
3. High quality surface finish.
4. Reduced construction period.

## Applications

1. Schools
2. Villas
3. Residential and Commercial Complexes
4. Private and Public Farms / Gardens





# Hollow core & solid slab

Hollow core slabs are pre-stressed concrete elements which are casted using a highly advanced automated extrusion technique. These slabs offer an economical and efficient floor/roof system for any project by giving maximum structural strength with minimum weight. As they are 40-50% lighter than conventional RC slabs they offer numerous benefits to engineers as well as architects while designing any project.

Hollow core slabs are pre-stressed concrete elements which are casted using a highly advanced automated extrusion technique. These slabs offer an economical and efficient floor/roof system for any project by giving maximum structural strength with minimum weight. As they are 40-50% lighter than conventional RC slabs they offer numerous benefits to engineers as well as architects while designing any project.

The standard width of these slabs is 1200mm with multiple cores running across the length of each slab. These cores are also used for placing electrical cables and pipes thus reducing the overall construction cycle & by providing a convenient option for MEP contractors as well.

SOS manufactures these slabs in varying thickness ranging from 150mm, 200mm 265mm, 320mm, 400mm & the largest being 500mm thick. These slabs can be designed to span up to 18m depending on the loading conditions and project requirements.

# Hollow core & solid slab

## Advantages

1. Considerably cheaper as compared to other system.
2. Offers longer spans and greater loads than conventional slab of same depth.
3. Reduction in weight leads to an overall lighter structural framing leading to cost savings.
4. Provides enormous design flexibility.
5. Superior fire resistance.
6. Speed and ease of construction.
7. Highly automated production under controlled environment.
8. Offers smooth soffit, ready to following trades.

## Applications

1. Villas
2. Schools
3. Office Buildings
4. Multi-level Parking structures
5. Labour Accommodations
6. Residential and Commercial Complexes





# Clients



*Jileep*



# WEBSITE

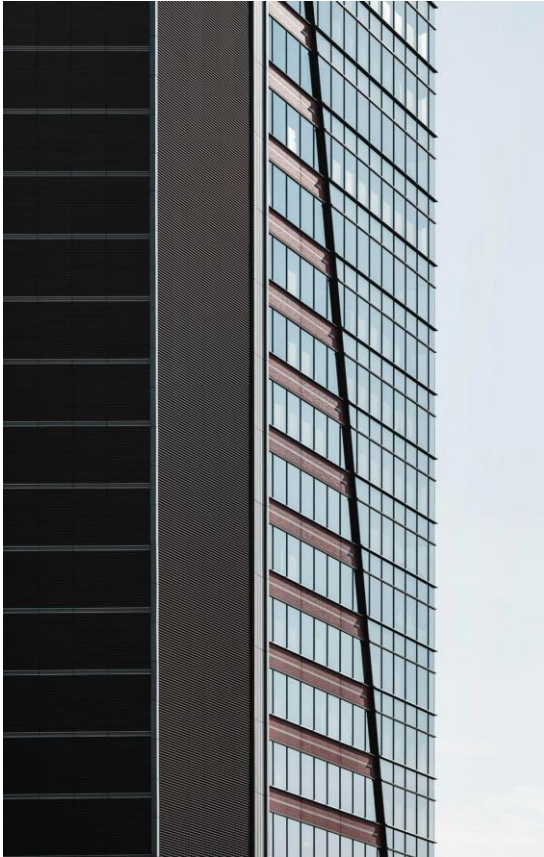
[www.senseofspace.co.in](http://www.senseofspace.co.in)

[www.senseofspace.co.in](http://www.senseofspace.co.in)

**SO**   
Sense Of Space



ARCHITECTURAL PRECAST CONCRETE & METAL FABRICATION



# THANKS!

---

OFFICE: 37-UDAI NAGAR A ,  
NIRMAN NAGAR ,JAIPUR, 302020

PLANT: RIICO Industrial area,  
Bagru Extension, Jaipur, Rajasthan  
302 018

[youremail@freepik.com](mailto:youremail@freepik.com)

+91 8930600200

[senseofspace.co.in](http://senseofspace.co.in)

